

NOTICE: THIS DESIGN WAS ORIGINATED BY AND EMBODIES A CONFIDENTIAL PROPRIETARY DESIGN OWNED BY SOUTHWESTERN INDUSTRIES. IT IS DISCLOSED IN CONFIDENCE FOR A SPECIFIC PURPOSE AND THE RECIPIENT HEREOF AGREES NOT TO MAKE ANY REPRODUCTION, DISCLOSURE, OR OTHER USE OF THIS INFORMATION WITHOUT THE WRITTEN CONSENT OF SOUTHWESTERN INDUSTRIES.

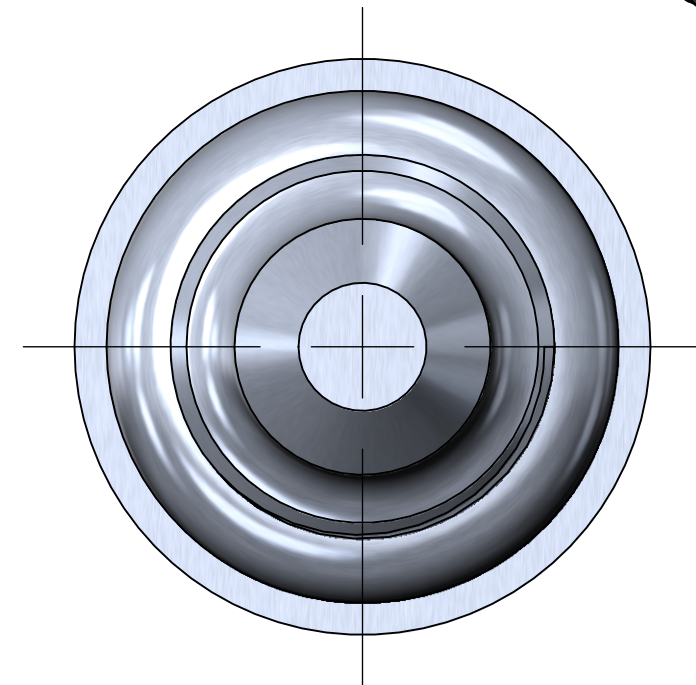
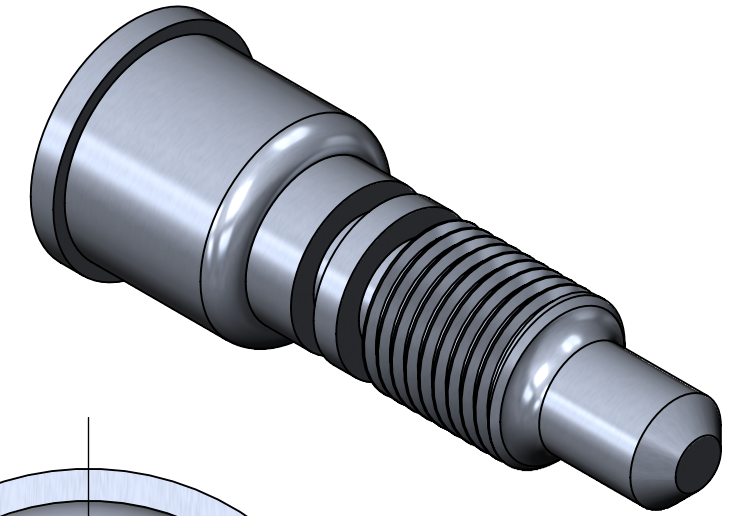
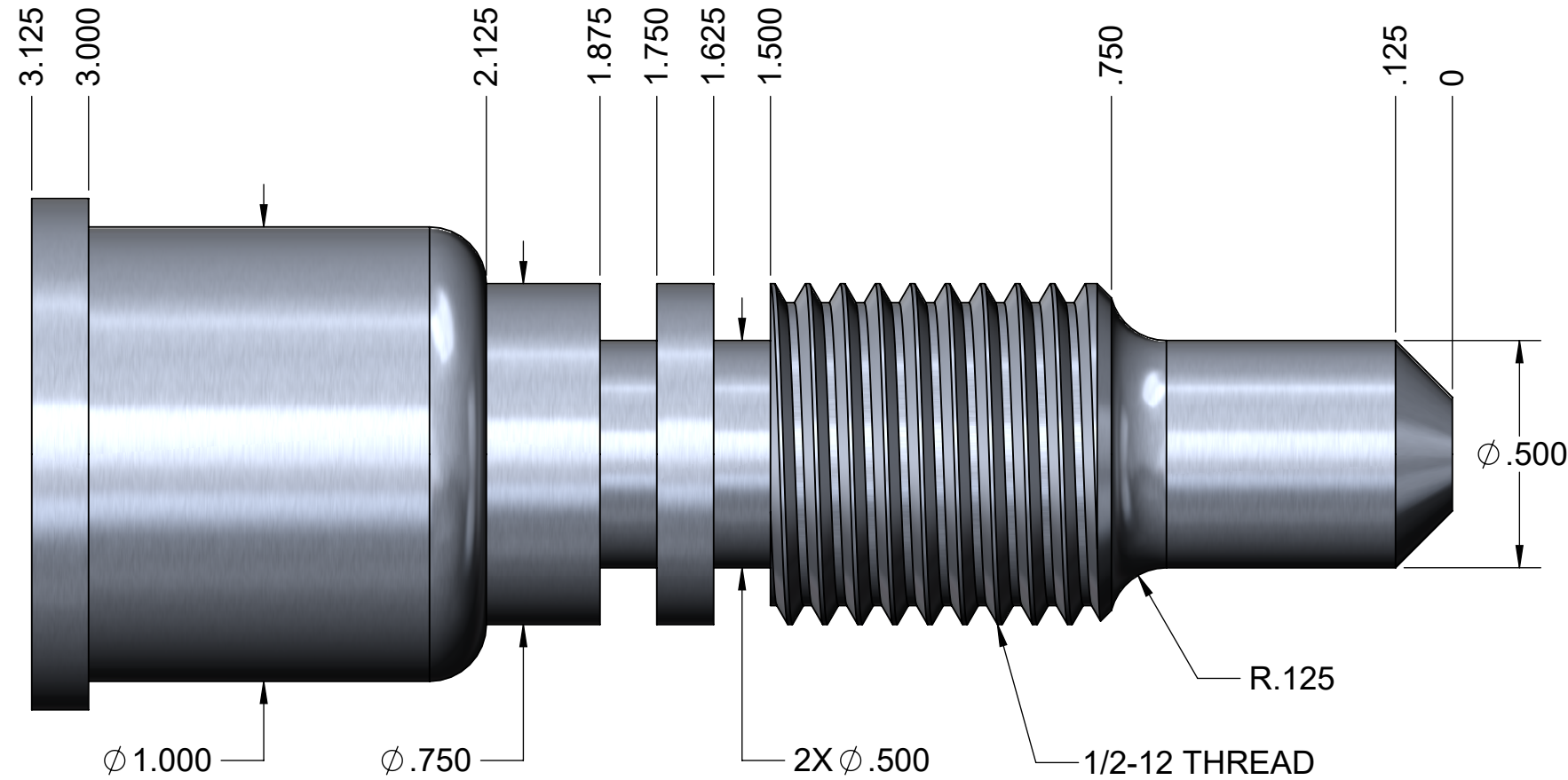
© SOUTHWESTERN INDUSTRIES, INC 2016 ALL RIGHTS RESERVED

**REVISION TABLE**

REV	REV DESCRIPTION	ECN/NPI#	DATE	DFT	ENG

**GENERAL NOTES: (UNLESS OTHERWISE SPECIFIED)**

- DEBUR & CLEAN
- MASK ALL TAPPED HOLES



<p>DIMENSIONS ARE IN INCHES DEC .X = ± 1, .XX = ± 0.01, .XXX = ± 0.005 ANGLES .XX = ± 0°30' FRACTION = ± 1/8" FINISH = 125 RMS DIMENSIONING PER ASME Y15.5</p> <p>THIRD ANGLE PROJECTION</p> <p>MATERIAL &amp; FINISH: ALUM 6061-T6</p>	APPROVALS	DATE	<b>PART-INCH</b>	
	DRAWN BY:	3/30/2020		
	ENGINEER:	3/30/2020	PART NUMBER:	LATHE SAMPLE DXF
	MASS (LBS):	0.142	DETAIL:	REV:
	SURF AREA (in <sup>2</sup> ):	10.786	SIZE: B	SHEET: 1 OF 1