



January 3, 2022

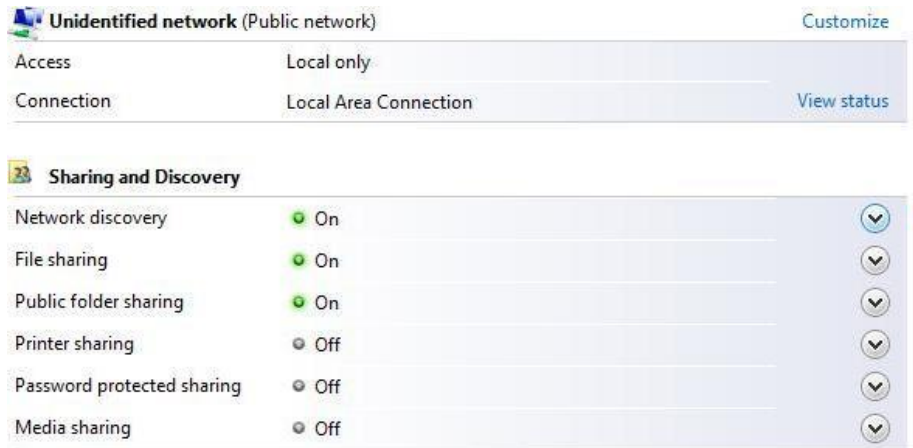
White Paper

Vista SMX Networking

Step 1 Set Workgroups:

Both the control and the computer must be on the same workgroup to communicate. To change the workgroup on the PC with Microsoft Vista:

- Click on the Start button
- Click on Network (see Figure 1)
- Click the Network and Sharing Center
- Click the down arrow next to Network Discovery (see Figure 2)
- Check the network discovery bubble
- Click change settings
- Click on Continue when prompted
- Click on Change
- Change workgroup name. Whatever you choose, it will have to match what is on the SX pendant. The computer name, however, needs to be unique from all others on this network.
- Click OK when the welcome message pops up, and again when prompted for a restart.
- Click close
- Click “Restart now” when prompted.

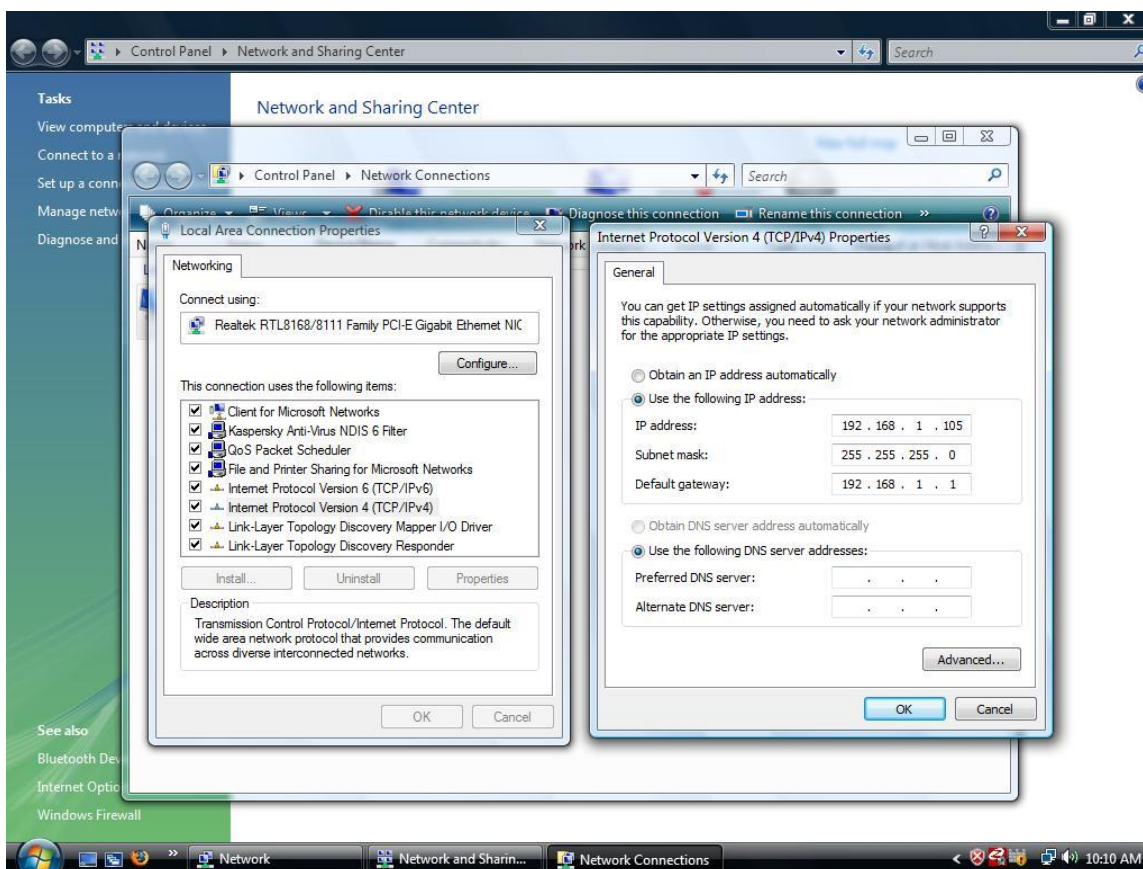


Step 2 Set IP Addresses

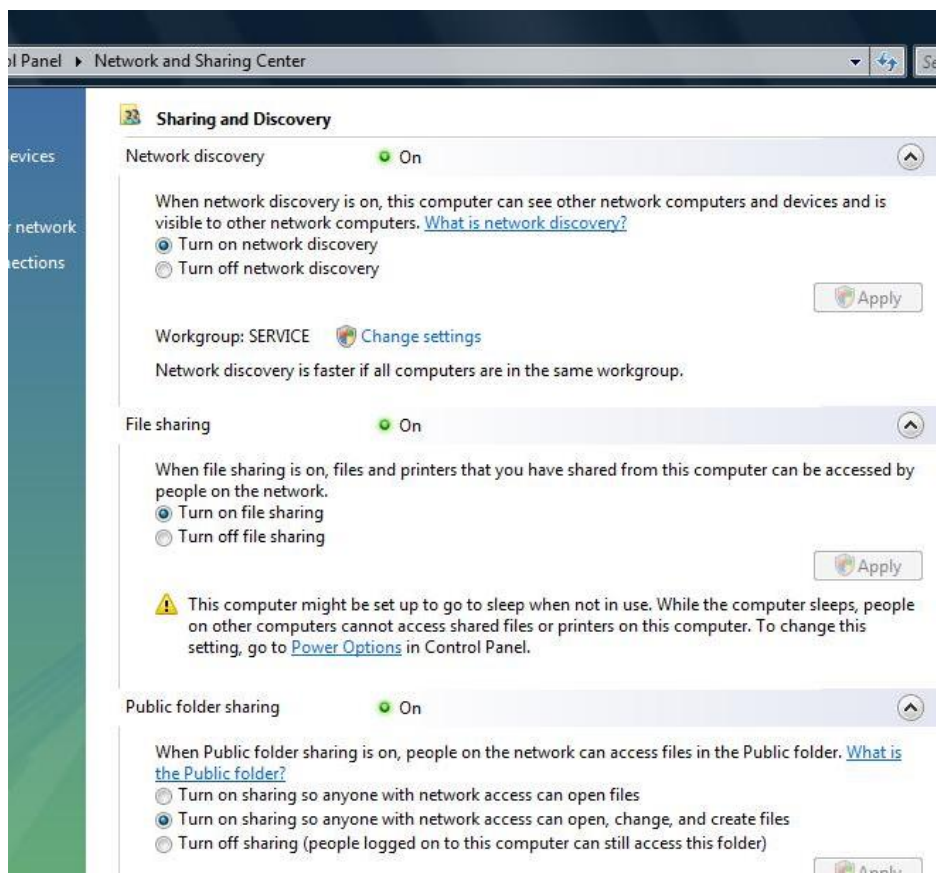
- Click on the Start button
- Click on Network
- Open Network and Sharing Center
- Click Manage Network Connections
- Right click Local Area Connection and select properties.
- Click on



- Click on Internet Protocol Version 4 (TCP/IPv4)



- Click Properties
- Select “Use the following IP address”
- Type in an IP that has the same first 3 groups of the IP address as the SX control. The last digit needs to be unique. If you are unsure, use 192.168.1.101
- Set Subnet Mask to 255.255.255.0





- Set Default
Gateway to be the same as the control (example 192.168.1.1)
- Click OK
- Click Close

Step 3 Setup Shared Folders

- On the Network and Sharing center, make sure File Sharing and Public Folder Sharing are both turned on.
- Turn password protected sharing off.

Step 4 Map Network Drive from SMX

Setting up the network on your Prototrak SX control. Note you MUST have the Network / Memory option in order to accomplish this.

- Press the SYS key on the left side of the screen.
- Select F1 - Config Net. This will bring up the PT4SX Network Tools screen.
- Start from Change IP Address. Click on the Select button.
- Click Use the following IP address
- Type in the following: 192.168.1.102
- Set Subnet Mask to 255.255.255.0
- Set Default Gateway to 192.168.1.1
- Add User/Password is optional. This feature is normally used for a Domain setup, not needed for a Workgroup setup.
- Now, choose Share Drive/Folder and hit the select button. Before continuing on, you may want to create a new folder to share out or just select the folders currently available in the SX control. Once the new folder is made (if needed), proceed to the next step.
- On the Share Drive/Folder screen, click on Browse, expand the C drive, and look for the folder that you want to share out. Highlight it and click OK.
- Give it a Share name and click OK.
- **Depending on which Pendant revision you may have:**
 - *For Rev D Pendants:*
 - On the PT4SX Network Tools screen, you should see a Save button. On the Rev D SX Pendants, you'll need to click on that Save button if you want the changes to be permanent. Otherwise, those changes will not be saved, and will be lost after restart.
 - *For Rev C & earlier Pendants:*



- Click on Exit to go back to the Prototrak screen. Select F3 - Shut Down and Yes to confirm. Shut power off when prompted, wait a few seconds, then power back up.
- Once the Prototrak is back up, hit the SYS soft key on left side of screen.
- Select F1 - Config Net.
- Click on the Map Network Drive option and hit the Select button.
- Give it a Drive letter. Make sure you put a : sign after the letter, ex: **F:** or **G:** not just **F** or **G**.
- On the Folder field, click on Browse, expand Entire Network, expand Microsoft Windows Network and expand the Workgroup name (or whatever name that's given for the workgroup).
- Look for the PC computer name and expand it.
- If you see the share folder, highlight it and click OK. Otherwise, keep expanding those directories until you see that share folder.
- Make sure "Mapped drive will not be persistent" box is not checked. If you got an error, repeat the process and verify that we are inputting the drive letter correctly. If no error, the drive should be mapped.
- **Depending on which Pendant revision you may have:**
 - *For Rev D Pendants:*
 - On the PT4SX Network Tools screen, you see a Save button. On the Rev D SX Pendants, you'll need to click on the Save button if you want the changes to be permanent. Otherwise, those changes will not be saved, and will be lost after restart.
 - *For Rev C & earlier Pendants:*
 - Click on Exit to go back to the Prototrak screen. Select F3 - Shut Down and Yes to confirm. Shut power off when prompted, wait a few seconds, then power back up.
- *Now to test out the mapped drive*
 - On the PC, make sure that there are files in that share folder. If not, copy some files into that folder.
 - Go back to the SX controller. Hit the Check System or Mode key until you are at the Main "Select a Mode" screen.
 - Hit F6 - Prog In/Out key, then F3 - Open, and hit the Tab key (F1) until you get to the Look In field.
 - You should see a drop down box, displaying all the available drives, once you tab over to the Look In section.
 - On the drop down box, you should see your Mapped Drive letter. Select it and hit



the Tab key again. This will open up the files available in that directory. If not, go through your setup process again, verify that no steps were missed or done incorrectly. If the problems still continues, contact Customer Service @ 800-367-3165.

- Select a file and hit F7 - Open File. Verify that the program opens up correctly.
- At this point, you have the option of creating a Map Drive from the PC to the SX or just have one share folder, and have the PC and SX send & retrieve files from that folder. If you wish to create a 2nd Map drive, proceed to the next step; otherwise, setup is complete.