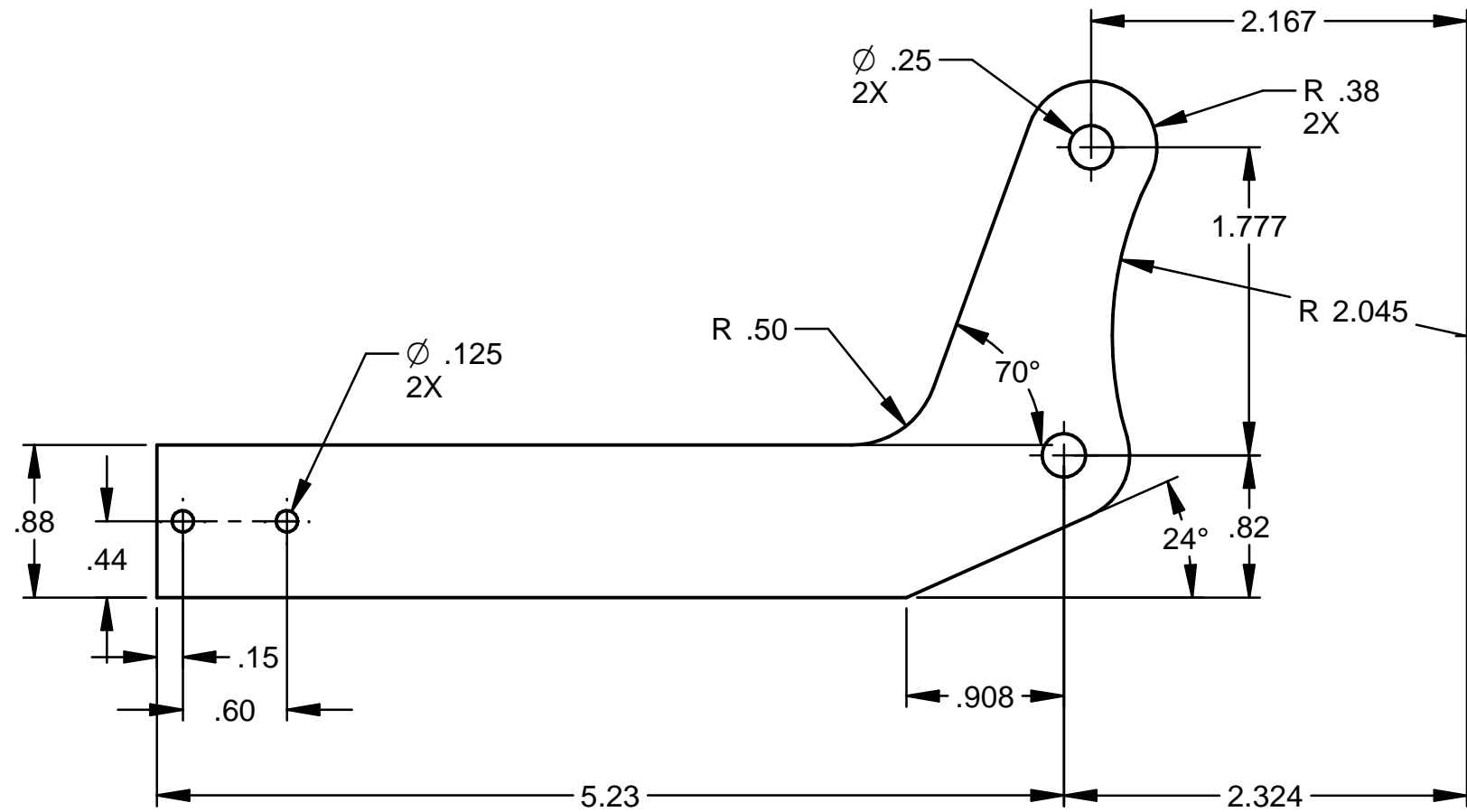
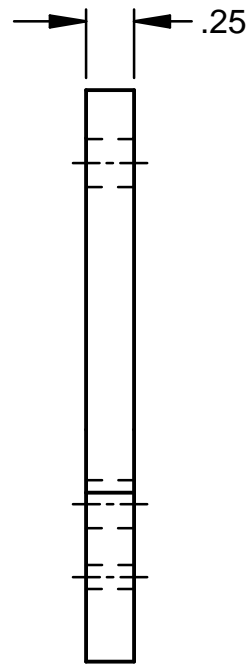


NOTICE: THIS DESIGN WAS ORIGINATED BY AND EMBODIES A CONFIDENTIAL PROPRIETARY DESIGN OWNED BY SOUTHWESTERN INDUSTRIES. IT IS DISCLOSED IN CONFIDENCE FOR A SPECIFIC PURPOSE AND THE RECIPIENT HEREOF AGREES NOT TO MAKE ANY REPRODUCTION, DISCLOSURE OR OTHER USE OF THIS INFORMATION WITHOUT THE WRITTEN CONSENT OF SOUTHWESTERN INDUSTRIES.

REVISIONS				
REV	DESCRIPTION	ECN	DATE	APPRV
1	PROTOTYPE RELEASE	---	11/21/13	GW
2	SCALE 1:1 WAS: 1.25:1	---	1/7/13	MW



NOTES: (UNLESS OTHERWISE SPECIFIED)

		DIMENSIONS ARE IN INCHES DEC. .X = ±.1, .XX = ±.01, .XXX = ±.005, ANGLES .XX = ±0°30' FRACTIONS = ±1/8 FINISH = 125 RMS REMOVE ALL SHARP EDGES MASK ALL TAPPED HOLES DIMENSIONING PER ASME Y14.5		APPROVALS DRAWN BY <b>Bob</b> ENGINEER <b>GW</b> ENGINEER FE	DATE 11/21/13 11/21/13	<b>SOUTHWESTERN INDUSTRIES, INC.</b> 2615 HOMESTEAD PLACE RANCHO DOMINGUEZ, CA 90220-5610			
		MATERIAL		TITLE		LEVER			
NEXT ASSY		USED ON		THIRD ANGLE PROJECTION		SIZE	CODE IDENT. NO.	DWG NO.	REV
APPLICATION		6061 AL		-		<b>B</b>	06238	MILL 18	2
		FINISH				SCALE:	-	SHEET 1 OF 1	