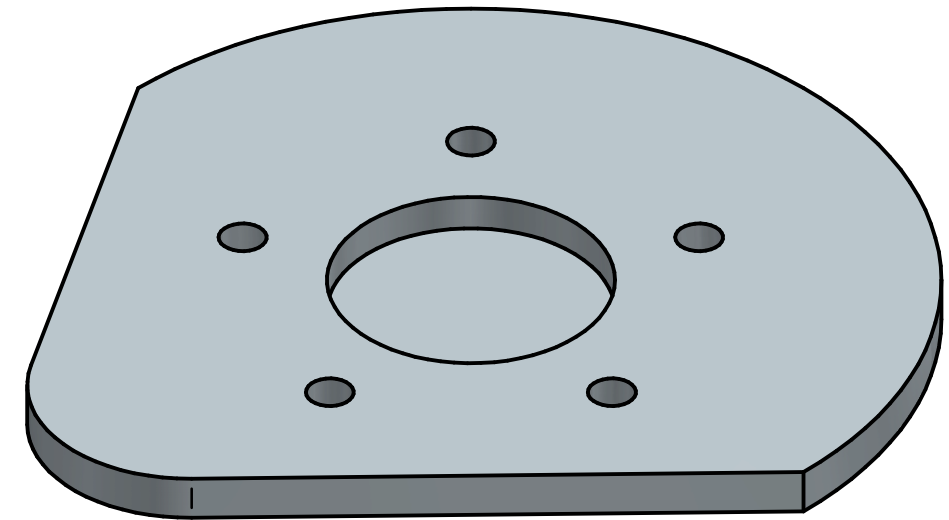
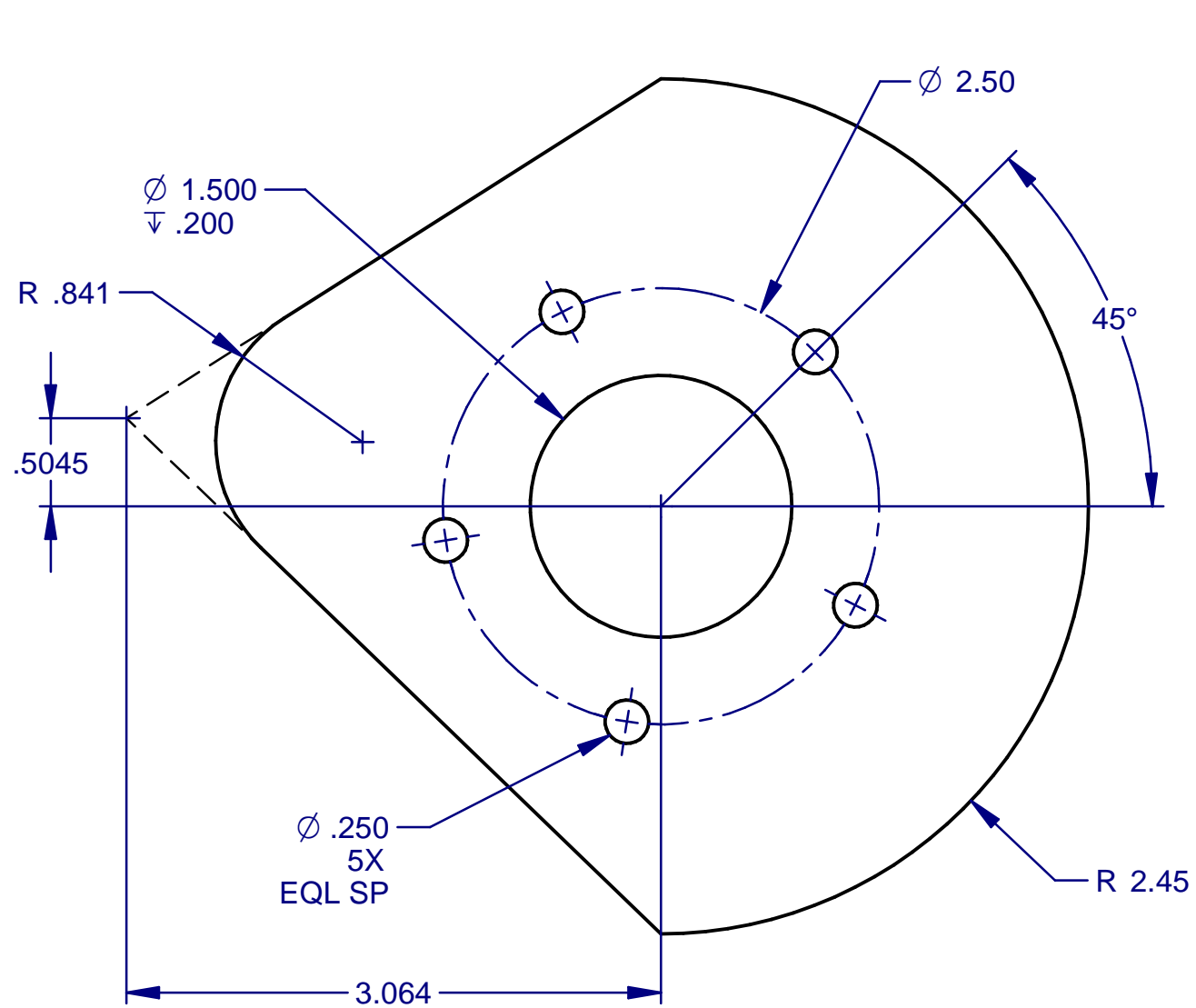


NOTICE: THIS DESIGN WAS ORIGINATED BY AND EMBODIES A CONFIDENTIAL PROPRIETARY DESIGN OWNED BY SOUTHWESTERN INDUSTRIES. IT IS DISCLOSED IN CONFIDENCE FOR A SPECIFIC PURPOSE AND THE RECIPIENT HEREOF AGREES NOT TO MAKE ANY REPRODUCTION, DISCLOSURE OR OTHER USE OF THIS INFORMATION WITHOUT THE WRITTEN CONSENT OF SOUTHWESTERN INDUSTRIES.

REVISIONS				
REV	DESCRIPTION	ECN	DATE	APPRV
1	PROTOTYPE RELEASE	---	7/26/13	SB
2	TITLE WAS: MILL 201	---	11/21/13	GW



		DIMENSIONS ARE IN INCHES DEC. .X = ± 1 , .XX = ± 01 , .XXX = ± 005 , ANGLES .XX = $\pm 0'30$ ' FRACTIONS = $\pm 1/8$ FINISH = 125 RMS REMOVE ALL SHARP EDGES MASK ALL TAPPED HOLES DIMENSIONING ASME Y14.5	APPROVALS	DATE	SOUTHWESTERN INDUSTRIES, INC. 2605 HOMESTEAD PLACE RANCHO DOMINGUEZ, CA. 90220-5610				
			DRAWN BY	Bob	7/26/13	TITLE			
			ENGINEER			BALLPARK			
			MFE			SIZE	CODE IDENT. NO.	DWG NO.	REV
NEXT ASSY	USED ON	MATERIAL	ALUMINUM		B	06238	MILL 201	2	
APPLICATION		FINISH	NONE		SCALE:	2:1	SHEET	1 OF 1	