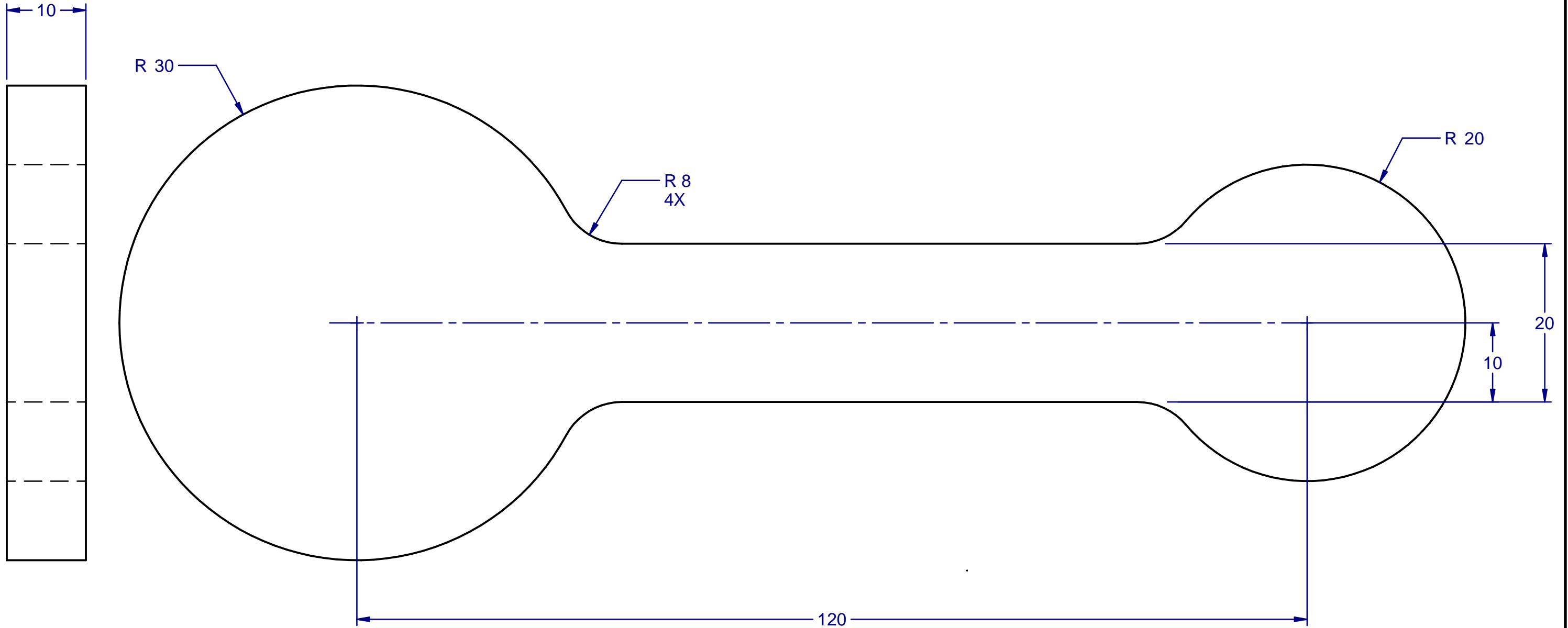


NOTICE: THIS DESIGN WAS ORIGINATED BY AND EMBODIES A CONFIDENTIAL PROPRIETARY DESIGN OWNED BY SOUTHWESTERN INDUSTRIES. IT IS DISCLOSED IN CONFIDENCE FOR A SPECIFIC PURPOSE AND THE RECIPIENT HEREOF AGREES NOT TO MAKE ANY REPRODUCTION, DISCLOSURE OR OTHER USE OF THIS INFORMATION WITHOUT THE WRITTEN CONSENT OF SOUTHWESTERN INDUSTRIES.

REVISIONS				
REV	DESCRIPTION	ECN	DATE	APPRV
1	PROTOTYPE RELEASE	---	7/26/13	SB
2	TITLE WAS: MILL 203	---	11/21/13	GW



		DIMENSIONS ARE IN MILLIMETERS 1-4 ±0.020, 4-16 ±0.025, 16-63 ±0.050, 63-250 ±0.070, 250-1000 ±0.100, 1000-1500 ±0.200 REMOVE ALL SHARP EDGES MASK ALL TAPPED HOLES DIMENSIONS PER ASME Y14.5	APPROVALS	DATE	SOUTHWESTERN INDUSTRIES, INC. 2605 HOMESTEAD PLACE RANCHO DOMINGUEZ, CA. 90220-5610			
			DRAWN BY	Bob	7/26/13	TITLE		
			ENGINEER			DOG BONE		
			MFE					
		MATERIAL	ALUMINUM		SIZE	CODE IDENT. NO.	DWG NO.	REV
NEXT ASSY	USED ON	FINISH	NONE		B	06238	MILL 203	2
APPLICATION					SCALE: 2:1	SHEET 1 OF 1		